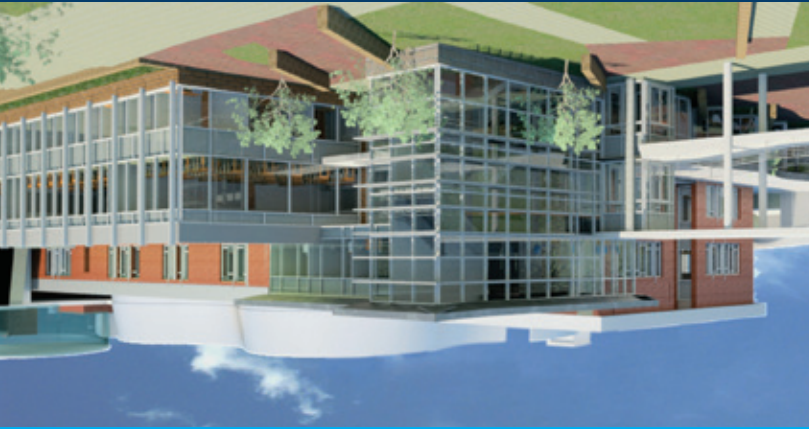


# PATHWAYS TO SUCCESS



• LANHAM HALL •



• QUEEN ANNE •



Transforming lives.

PRINCE GEORGE'S  
COMMUNITY COLLEGE

## FOUNDATION

Prince George's Community College Foundation, Inc.  
301 Largo Road, A-312  
Largo, MD 20774

**You can also place your order online  
at [www.pgcc.edu/go/foundation](http://www.pgcc.edu/go/foundation)**

©2017 Prince George's Community College. All rights reserved. 17113

### Order Information

\_\_\_\_\_  
*Name*

\_\_\_\_\_  
*Address*

\_\_\_\_\_  
*City*                      *State*                      *ZIP*

\_\_\_\_\_  
*Telephone*                      *E-mail*

<i>Qty.</i>	<i>Item</i>	<i>Cost</i>
_____	4" x 8" Brick @ \$150	\$ _____
_____	Mini Replica @ \$15	\$ _____

Total \$ \_\_\_\_\_

### Payment Method

Check: Make payable to Prince George's Community College Foundation, Inc.

MasterCard       VISA       Discover       AMEX

\_\_\_\_\_  
*Account #*                                      *Expiration Date*

\_\_\_\_\_  
*Signature*

Select Location:  Queen Anne     Lanham Hall

### Return this form to:

Prince George's Community College Foundation, Inc., 301 Largo Road, Room A-312, Largo, MD 20774

For more information, please call 301-546-0858, fax 301-546-3066, e-mail [foundation@pgcc.edu](mailto:foundation@pgcc.edu), or visit [www.pgcc.edu/go/foundation](http://www.pgcc.edu/go/foundation)

over

# It's Happening... **HERE!**



Transforming lives.

**PRINCE GEORGE'S**  
COMMUNITY COLLEGE

## Pathways to Success Brick Program

Be a part of an exciting new era of expanded opportunities for students and the community. Through the *Pathways to Success* brick program, friends, alumni, students, staff, faculty and businesses can create a lasting memory in honor of a family member, retiree, workgroup, business, student group, loved one, friend, or professor—the possibilities are endless.

Personalized engraved bricks will pave the courtyards of the newly renovated and expanded **Lanham Hall** and the **Queen Anne Building**. The courtyards of these facilities will reflect a myriad of partnerships as well as the individual and family milestones that make success “happen.”

Prince George's Community College is committed to creating an environment in which students can thrive. Your support of the *Pathways to Success* brick program will enable more access to education by increasing scholarships available to students and enhancing academic, workforce development and student support programs and services. Expanding *Pathways to Success* is a **win-win** for all!

*Successful students bring their education and skills to the workforce and contribute to the vitality of their communities.*



### Prince George's Community College Pathways to Success Brick Program Form

[www.pgcc.edu/go/foundation](http://www.pgcc.edu/go/foundation)

Clearly print the inscription for your 4" x 8" commemorative brick *exactly as you would like it to appear* in the spaces below. Maximum: Three (3) lines, 20 characters per line. A character is defined as a letter, number, symbol, space or punctuation mark. Please use one form per brick. This form may be duplicated to accommodate multiple orders. Please fill out both sides of this form.

Line 1

--	--	--	--	--	--	--	--	--	--	--	--	--	--	--	--	--	--	--	--

Line 2

--	--	--	--	--	--	--	--	--	--	--	--	--	--	--	--	--	--	--	--

Line 3

--	--	--	--	--	--	--	--	--	--	--	--	--	--	--	--	--	--	--	--

The Prince George's Community College Foundation, Inc. is operated exclusively as a 501 (c)(3) nonprofit organization established for the charitable purposes of furthering educational programs, facilities, and scholarships at Prince George's Community College.

over